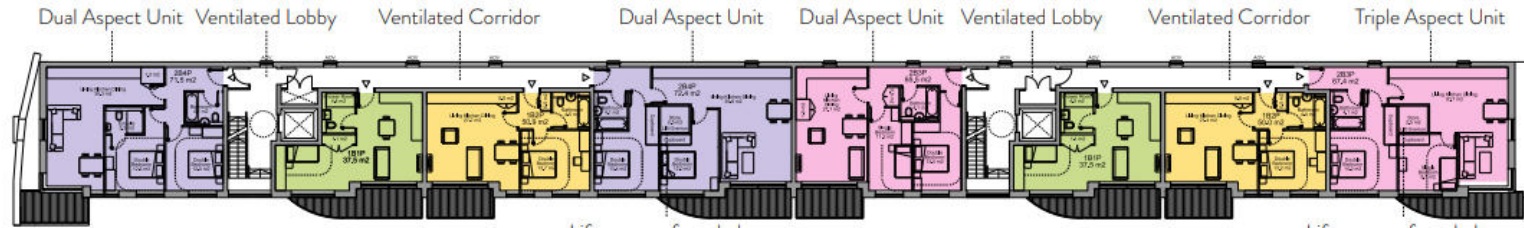


## PROPOSED PLANS



### Sixth Floor

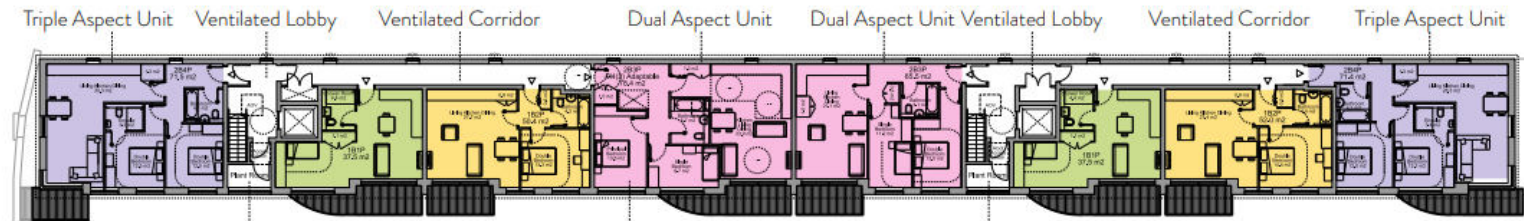
2 x 1B1P  
2 x 1B2P

2 x 2B3P  
2 x 2B4P

**Total: 8 Units**

Lift overrun from below  
forms 600mm high ledge  
within cupboards

Lift overrun from below  
forms 600mm high ledge  
within cupboards



### Seventh Floor

2 x 1B1P  
2 x 1B2P

2 x 2B3P  
2 x 2B4P

**Total: 8 Units**

Plant room  
relocated

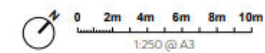
2B3P M4(3)  
Wheelchair Adaptable Unit

Plant room  
relocated

### Overall Schedule

4 x 1B1P  
4 x 1B2P  
4 x 2B3P  
4 x 2B4P

**Total: 16 units**



This page is intentionally left blank